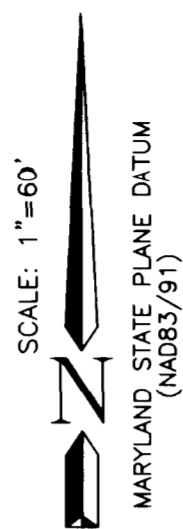


VICINITY MAP  
(NOT TO SCALE)



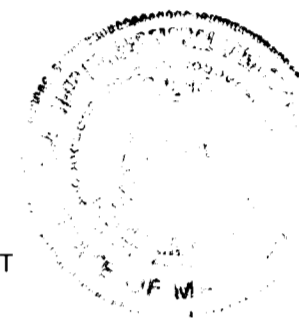
**SURVEYOR'S CERTIFICATION**

I HEREBY CERTIFY THAT THIS CONDOMINIUM PLAT CONSISTING OF 26 PAGES IS CORRECT; THAT IT IS A CONDOMINIUM PLAT OF THE LAND KNOWN AS PARCEL D AS SHOWN ON A SUBDIVISION RECORD PLAT ENTITLED "GROSVENOR PARK" AND RECORDED AMONG THE LAND RECORDS OF MONTGOMERY COUNTY, MARYLAND IN PLAT BOOK 123 AS PLAT NO. 14472; THAT IT HAS BEEN PREPARED IN ACCORDANCE WITH THE REQUIREMENTS OF TITLE 11 OF THE REAL PROPERTY ARTICLE, SECTION 11-105 OF THE ANNOTATED CODE OF MARYLAND (2003), AS AMENDED; THAT THIS PLAT, TOGETHER WITH THE APPLICABLE WORDING OF THE DECLARATION, IS A CORRECT REPRESENTATION OF THE CONDOMINIUM DESCRIBED AND THE IDENTIFICATION AND LOCATION OF EACH UNIT AND THE COMMON ELEMENTS, AS CONSTRUCTED, CAN BE DETERMINED FROM THEM.

I FURTHER CERTIFY THAT I WAS IN RESPONSIBLE CHARGE OVER THE PREPARATION OF THIS CONDOMINIUM PLAT AND THE SURVEY ON WHICH IT IS BASED, ALL IN COMPLIANCE WITH REQUIREMENTS SET FORTH IN 9.13.06.12 OF THE COMAR REGULATIONS.

DATE: 10-13-2005

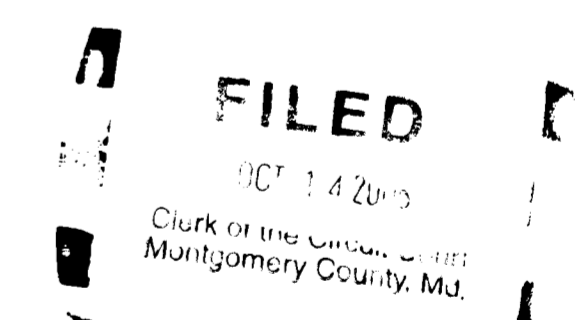
*R. Collier*  
RONALD L. COLLIER  
PROFESSIONAL LAND SURVEYOR  
MARYLAND REG. NO. 20014



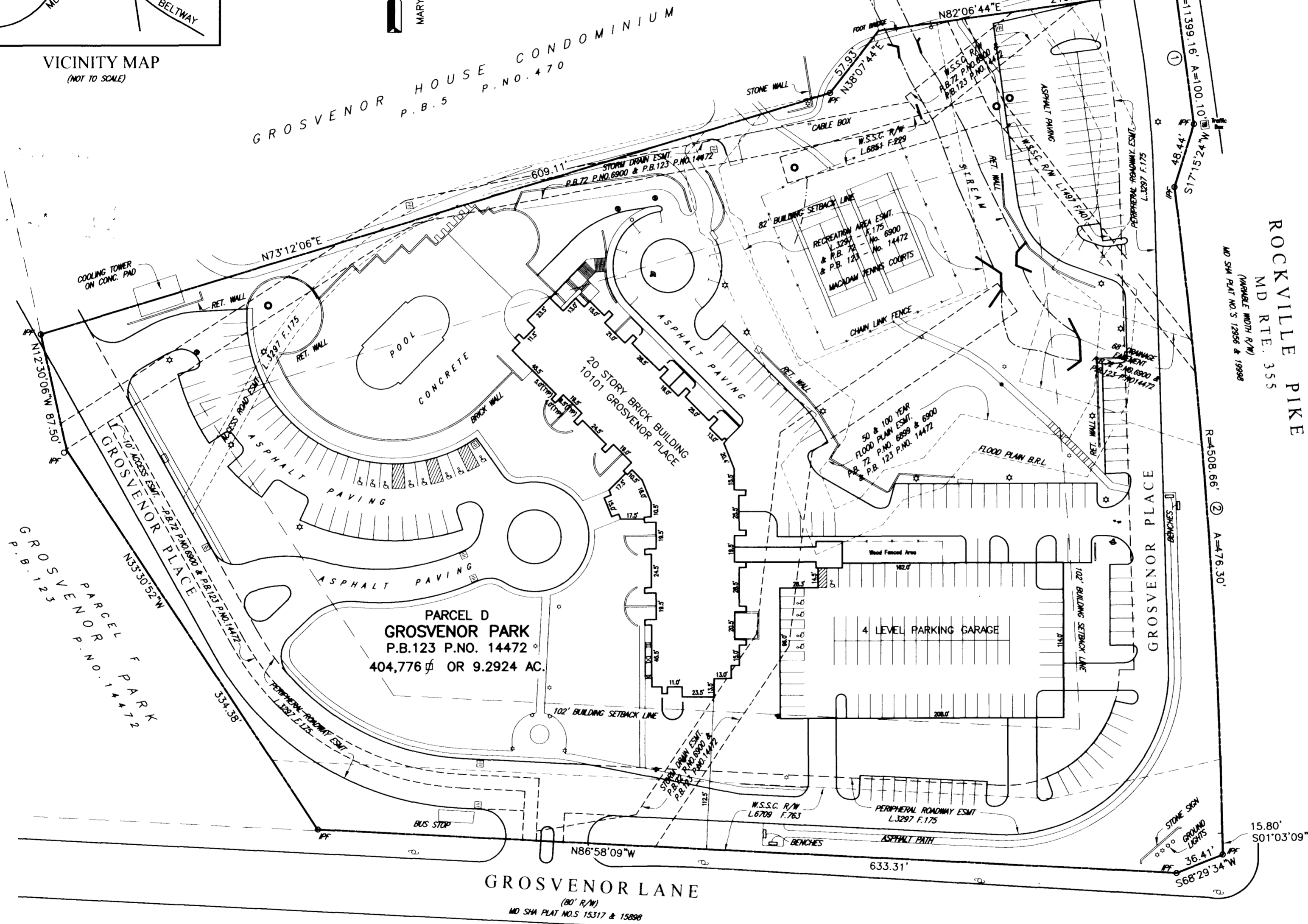
**LEGEND**

- ☆ LAMP
- ◆ FIRE HYDRANT
- ◇ WATER VALVE
- STORM DRAIN MANHOLE
- SEWER MANHOLE
- IRON PIPE FOUND
- ♿ HANDICAP PARKING SPACE
- ⊙ UTILITY POLE
- ⊠ STORM DRAIN GRATE

CURVE TABLE						
CURVE	RADIUS	LENGTH	DELTA	TANGENT	BEARING	CHORD
1	11399.16	100.10	0°30'11"	50.05	S07°38'06"E	100.10
2	4508.66	476.30	6°03'10"	238.37	S04°04'44"E	476.08



CONDOMINIUM PLAT  
AS-BUILT PLAN  
**10101 GROSVENOR  
PARK CONDOMINIUM**  
ROCKVILLE (4TH) DISTRICT  
MONTGOMERY COUNTY, MARYLAND  
OCTOBER, 2005 SCALE: 1"=60'



NOTE:  
THE BOUNDARY SHOWN HEREON IS BASED ON A SURVEY BY CHARLES P. JOHNSON & ASSOC., INC.  
THE EASEMENT INFORMATION IS TAKEN FROM AN ALTA/ACSM LAND TITLE SURVEY BY EDWARD E. NORTHRUP  
FOR AND ON BEHALF OF MILMAN SURVEYING, INC. DATED NOVEMBER 24, 2004.

**CPJ** Charles P. Johnson & Associates, Inc.  
PLANNERS - ENGINEERS - LANDSCAPE ARCHITECTS - SURVEYORS  
REGISTERED PROFESSIONAL SURVEYORS - MARYLAND AND DISTRICT OF COLUMBIA  
10000 ROCKVILLE PIKE, SUITE 200, ROCKVILLE, MD 20850  
TEL: 301-761-1000 FAX: 301-761-1001

1113328 MDR 3501264 - 7120-1